

# Preferred Communications

MSATG2 Tracking ...Peace of mind at the push of a button.



## MSAT G2 Tracking

MSAT-G2 Tracking is an event driven service that operates exclusively with the MSAT-G2 radio. The radio's antenna system contains a GPS receiver which transmits location information over the MSAT Network when users press the PTT button, or initiate a telephone call. The location data resides at the SkyTerra Hub where it can be accessed via the internet by subscribing to one of the following service options:

**1. Standard MSAT-G2 Tracking** – Standard service is available to organizations that wish to include MSAT-G2 GPS location information into their existing mapping solution. SkyTerra has developed a WEB Services API to facilitate the distribution of location data and account information to various Host computers via the internet. The location data is pushed to each Host Computer established on the network. Each organization is then able to display the information using its own mapping application.

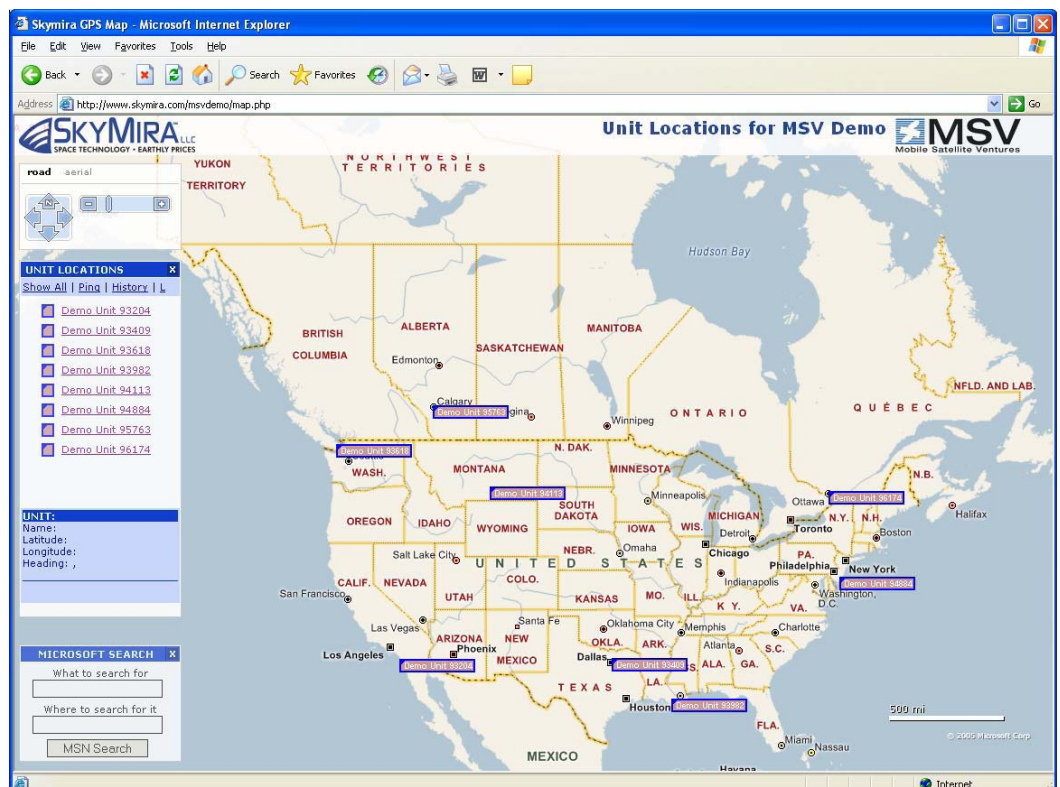
**2. Enhanced MSAT-G2 Tracking** – Enhanced MSAT-G2 Tracking is a bundled service available to organizations that do not have a web mapping solution. SkyTerra provides a user-friendly mapping solution developed by SkyMira LLC, a web application provider with extensive MSAT experience. Access to radio location information is as easy as going to [www.skymira.com/gps/login.php](http://www.skymira.com/gps/login.php) and entering a SkyTerra provided username and password.

410 Central Avenue  
Butner, NC 27509

Phone: 1-800-300-6020  
Fax: 1-919-575-4633

Email: [carlyn.lehman@satstar.com](mailto:carlyn.lehman@satstar.com)

[www.satstar.com](http://www.satstar.com)





# MSAT G2 Tracking Cont'd...

**MSAT-G2 Tracking Operation:** There are three ways of transmitting location information over the MSAT Network. Once the service is activated, users have access to all three options.

**1. PTT Tracking** – location information is transmitted every time a user presses the PTT key while in Two-way radio mode. Information is transmitted over-the-air every time a user initiates a Two-way radio conference or responds to one. Location information is also transmitted when a Priority 1 interruption is initiated.

**2. Telephony Tracking** - Location information is transmitted when a telephone call is initially setup, and at one minute increments while the call is in progress.

**3. On-demand Polling** - A host computer and/or dispatcher can Poll the MSAT-G2 radio for location information at any time. If a valid Poll request is received by the MSAT Hub from a host computer and/or dispatcher, the SkyTerra hub sends a poll request to the MSAT-G2 radio. All Poll requests are billable, even in cases where the request has timed out because of a lack of response. An MSAT-G2 radio may not have responded for a variety reasons (not powered on, no line of sight to the satellite etc.). The request is billable in these circumstances because satellite resources are utilized.

## Service Pricing:

Standard Tracking:

Activation	\$0.00
Monthly Access Fee - Per user/Month	\$7.00
Polling	\$0.60/poll

Enhanced Tracking:

Activation	\$0.00
Monthly Access Fee - Per user/Month	\$19.00
Polling	\$0.60/poll

**SKYMIRA WEB MAPPING APPLICATION INCLUDED**

*MSATG2 Tracking ...Peace of mind at the push of a button.*